

The Blessing

(based on the recording by Kari Jobe, Cody Carnes & Elevation Worship | original key: B)

Words and Music by
Chris Brown, Cody Carnes,
Kari Jobe and Steven Furtick

♩ = 70

VERSE

G

C²(no3)

G



The Lord bless you _ and keep you, make his face shine _ up - on _

4

D⁽⁴⁾

Em⁷

C²(no3)



_ you and be gra - cious _ to you. The Lord turn his _ face toward you

7

G

D⁽⁴⁾

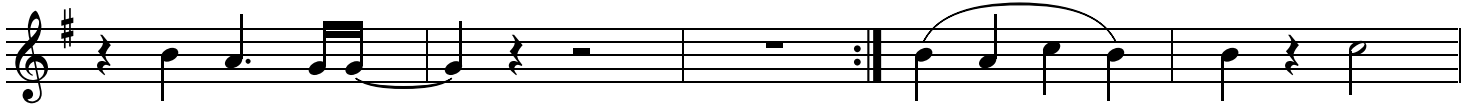
G

G^{sus}

CHORUS

Em⁷

C²(no3)



and give you peace. _ A - men, a -

12

G

D⁽⁴⁾

Em⁷

C²(no3)



-men, a - men. A - men, a -

16

G

1.
D⁽⁴⁾

2, 4.
D⁽⁴⁾

3, 5.
D⁽⁴⁾ (2nd x to Br.)



-men, a - men. - men. - men. (May his fa -

CCLI Song # 7147007

© 2020 Capitol CMG Paragon | Kari Jobe Carnes Music | Worship Together Music | Writer's Roof Publishing | Music by Elevation Worship Publishing

For use solely with the SongSelect®. Terms of Use. All rights reserved. www.ccli.com

CCLI License # 11288135

INSTRUMENTAL

20 Em⁷ C²(no3) G D⁽⁴⁾

Musical notation for instrumental section 20-23, starting with a treble clef and a key signature of one sharp (F#). The notes are: 20: F#4, G4, A4, B4; 21: C5, B4, A4, G4; 22: F#4, G4, A4, B4; 23: C5, B4, A4, G4.

May his fa -
(May his pres) -
(In the morn)-

BRIDGE

24 Em⁷ C²(no3)

Musical notation for bridge section 24-25, starting with a treble clef and a key signature of one sharp (F#). The notes are: 24: F#4, G4, A4, B4; 25: C5, B4, A4, G4.

- vor be up - on _ you and a thou - sand gen - er - a - tions and your fam -
- ence go be - fore _ you and be - hind _ you and be - side _ you, all a - round .
- ing, in the eve - ning, in your com - ing and your go - ing, in your weep -

26 G

1. D⁽⁴⁾ (repeat as desired)

Musical notation for bridge section 26-27, starting with a treble clef and a key signature of one sharp (F#). The notes are: 26: F#4, G4, A4, B4; 27: C5, B4, A4, G4.

- 'ly and your chil - dren and their chil - dren _ and their chil - dren. May his fa -
_ you and with - in _ you. He is with
- ing and re - joic - ing, He is for

28

2, 3, 5, 6. D⁽⁴⁾ | 4, 7. D⁽⁴⁾

Musical notation for bridge section 28-29, starting with a treble clef and a key signature of one sharp (F#). The notes are: 28: F#4, G4, A4, B4; 29: C5, B4, A4, G4.

- dren _ and their chil - dren. May his pres - _ you, _ he is for _ you. He is for -
_ you, _ he is with _ you. In the morn -

TAG

30 Em⁷ C²(no3)

Musical notation for tag section 30-31, starting with a treble clef and a key signature of one sharp (F#). The notes are: 30: F#4, G4, A4, B4; 31: C5, B4, A4, G4.

_ you, he is for _ you, he is for _ you, he is for _ you, he is for _

32 G

1. D⁽⁴⁾ | 2. D⁽⁴⁾ C²(no3)

D.S.

Musical notation for tag section 32-33, starting with a treble clef and a key signature of one sharp (F#). The notes are: 32: F#4, G4, A4, B4; 33: C5, B4, A4, G4.

_ you, he is for _ you, he is for _ you. _ you.